

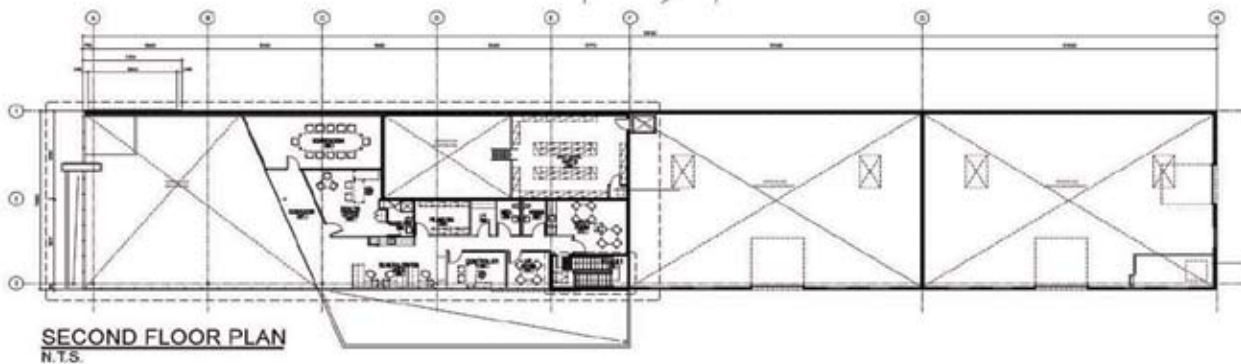
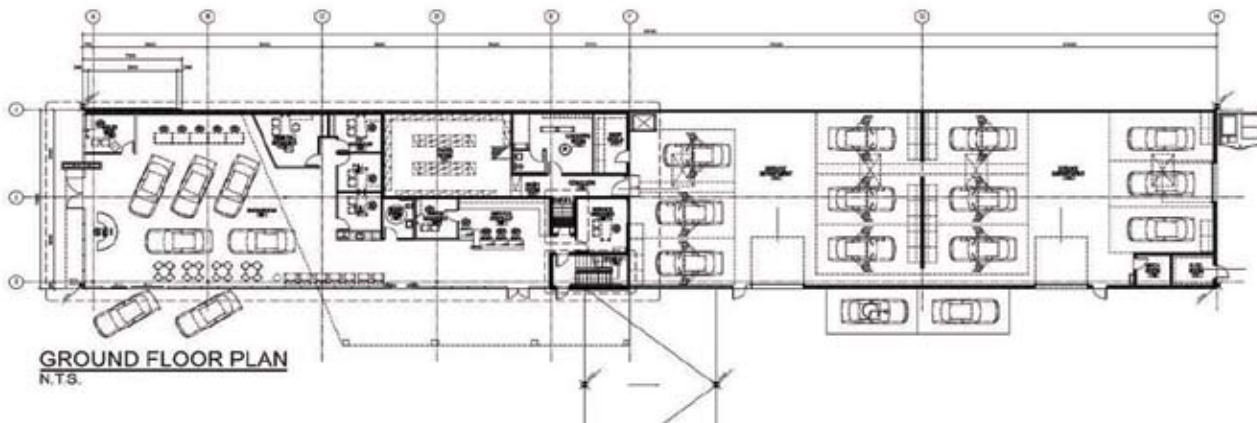
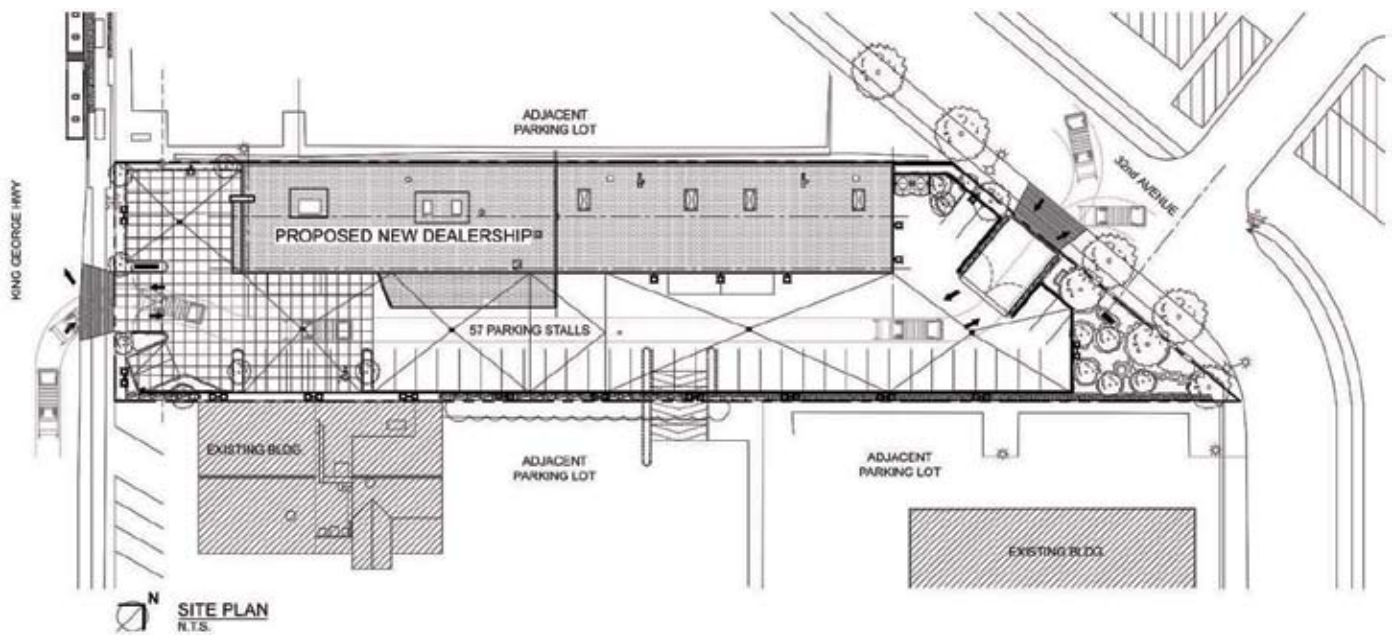


Surrey, BC

This new automobile sales / service operation is located on King George Highway, just north of White Rock, BC. The building concept was provided to CAGP by Hyundai Canada, to be adjusted to suit local planning and building bylaws as well as specific site conditions.

The trapezoid site is located between a larger car dealership and a well-known 'theme' restaurant along a busy commercial strip with a quieter residential development providing the fourth frontage. The elongated, two-storey building with sales showroom to the front and service bays to the rear is located along the north property line with vehicle access, circulation and display parking to the south. The building is clad in Hyundai's corporate-standard neutral glass/metal curtainwall system and split-face concrete block. All display and service facilities meet Hyundai's criteria to ensure sales success.

The site is raised approx. 4 ft. to meet the primary highway frontage and along with the building, steps down to reduce visual impact to the adjacent residential area. Perimeter site frontage is achieved with stepped landscape block walls with extensive planting as negotiated with City of Surrey planners. Lot lighting and project signage are carefully controlled by planning guidelines as were all aspects of the building design and operations prior to approvals being granted. Construction Estimate: \$4.0M, 2006.



Client/Contractor:
Ffun, Saskatoon, SK.
Canarc Construction Ltd.

Site:
King George Highway, just north of
White Rock, BC.

Programme:
16,000 sq. ft., two-storey steel
frame building for automobile sales,
service and administrative offices. 57
exterior parking spaces with extensive
landscaping.

Construction Estimate:
\$4.0M, 2006.

Office & Commercial

HYUNDAI Dealership