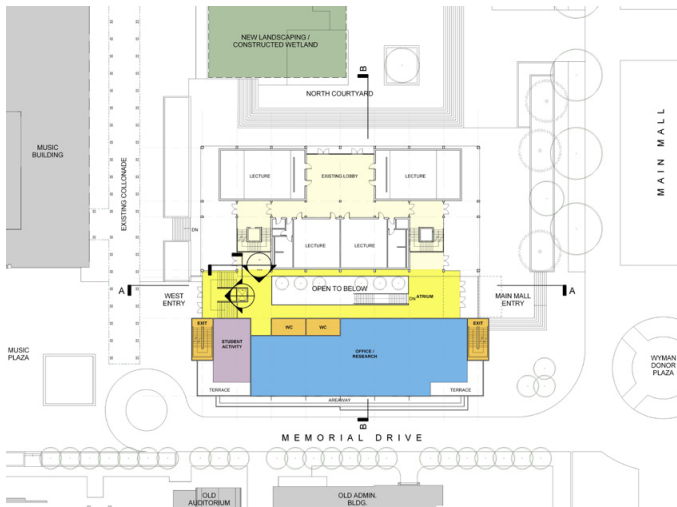


Vancouver, BC

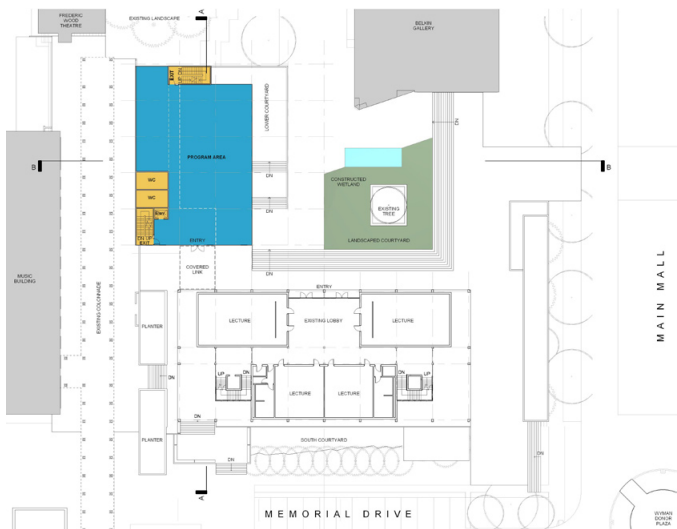
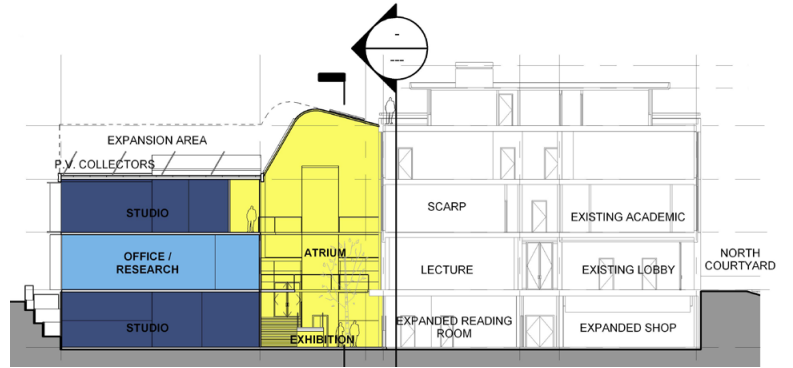
UBC's Faculty of Applied Science (FAS) retained CAGP in January 2007 to carry out a planning study for a new addition to the Frederick Lasserre Building accommodating the space needs of the newly consolidated School of Architecture / Landscape Architecture (SALA). Designed and constructed in the early 1960's and named for UBC's first Director of the School of Architecture, the existing building is a small but elegant four-storey concrete and glass 'modern' building which, due to it's age, now requires extensive code and programmatic upgrades (the subject of a recent study by another architectural firm).

Our firm was charged with studying the potential to add a minimum of 1,500 netSM (approx. 2,250 grossSM or 25,000 grossSF) of program area directly linked or adjacent to Lasserre. A Master Space Program prepared by RPG Consultants in 2005 was made available and formed the basis for programming discussions with SALA faculty and other building occupants, The School of Community & Regional Planning and Dept. of Art History / Visual Art Theory. Various planning options were developed which led to more refined space plan options for costing. These confirmed the 'design potential' for the addition and included the integration of innovative sustainable design features in the new building to reflect SALA's commitment to this critical public issue. This study forms the basis for the project's advancement by FAS into future fundraising and detailed design stages.

Construction cost estimates; \$8.2M - \$18.4M (2008), depending on option selected.



OPTION 2



OPTION 3

