



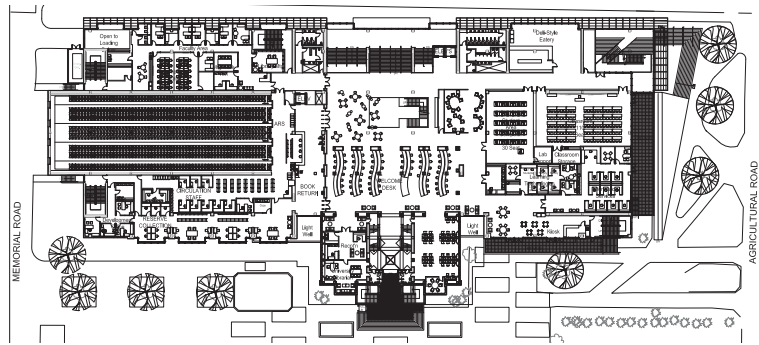
Vancouver, B.C.

In the spring of 2001 The Colborne Architectural Group Pacific was commissioned by UBC's Assoc. VP of Land & Building Services to study planning feasibility for re-development of the existing Main Library as the 'University Learning Centre'. UBC's Librarian proposed the initial concept to create a multi-functional learning and research facility centered around the c.1925 heritage library. A benefit would be retention of the important UBC landmark building and minimal disruption to this key campus site. Several expansion scenarios were studied; resulting in two preliminary concepts for phased demolition and reconstruction of 200,000 sq. ft. of new space directly linked to the 36,000 sq.ft. 'heritage core.' Following programming, urban design, and budget reviews by campus authorities, the UBC Board of Governors approved the project concept in May 2001.

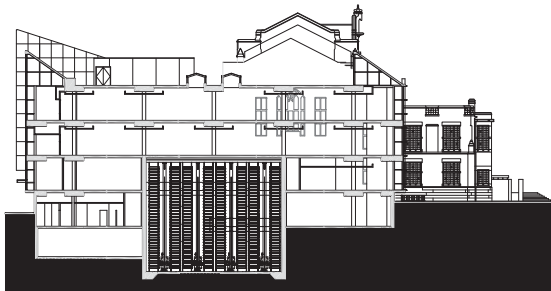
In October, 2002, in collaboration with Downs Archambault + Partners, Vancouver and Hardy Holzman Pfeiffer Associates, Los Angeles, the Colborne Architectural Group was successful in being appointed to advance the project.

Known as The Irving K. Barber Learning Centre, the new building will showcase UBC's commitment to integrating new technology with creative, flexible learning and research environments. The design incorporates Canada's first Automatic Storage and Retrieval System holding 1.4 million volumes in addition to 500,000 volumes in traditional, open library stacks. A series of arrival and transition spaces make up the 'learning commons' with technology access for students and the general public. Through numerous LEED based energy saving and environmentally responsible design features, the Learning Centre will demonstrate UBC's focus on sustainable design.

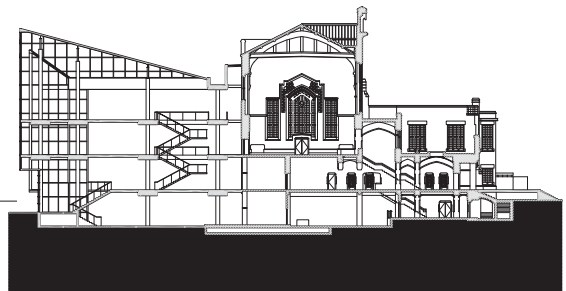
Phased construction commences fall, 2003 with Phase 1 complete late spring 2005 and Phase 2 completed spring 2008. Construction costs \$60 M.



2 FIRST LEVEL PLAN  
SCALE: 1/8"=1'-0"



1 SECTION  
SCALE: 1/16"=1'-0"



2 SECTION  
SCALE: 1/16"=1'-0"