

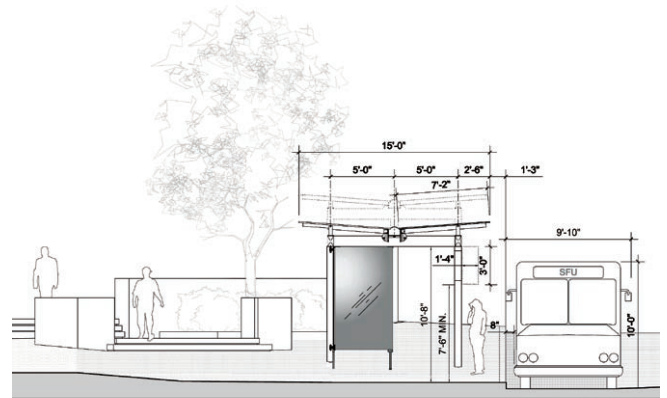


Burnaby, BC:

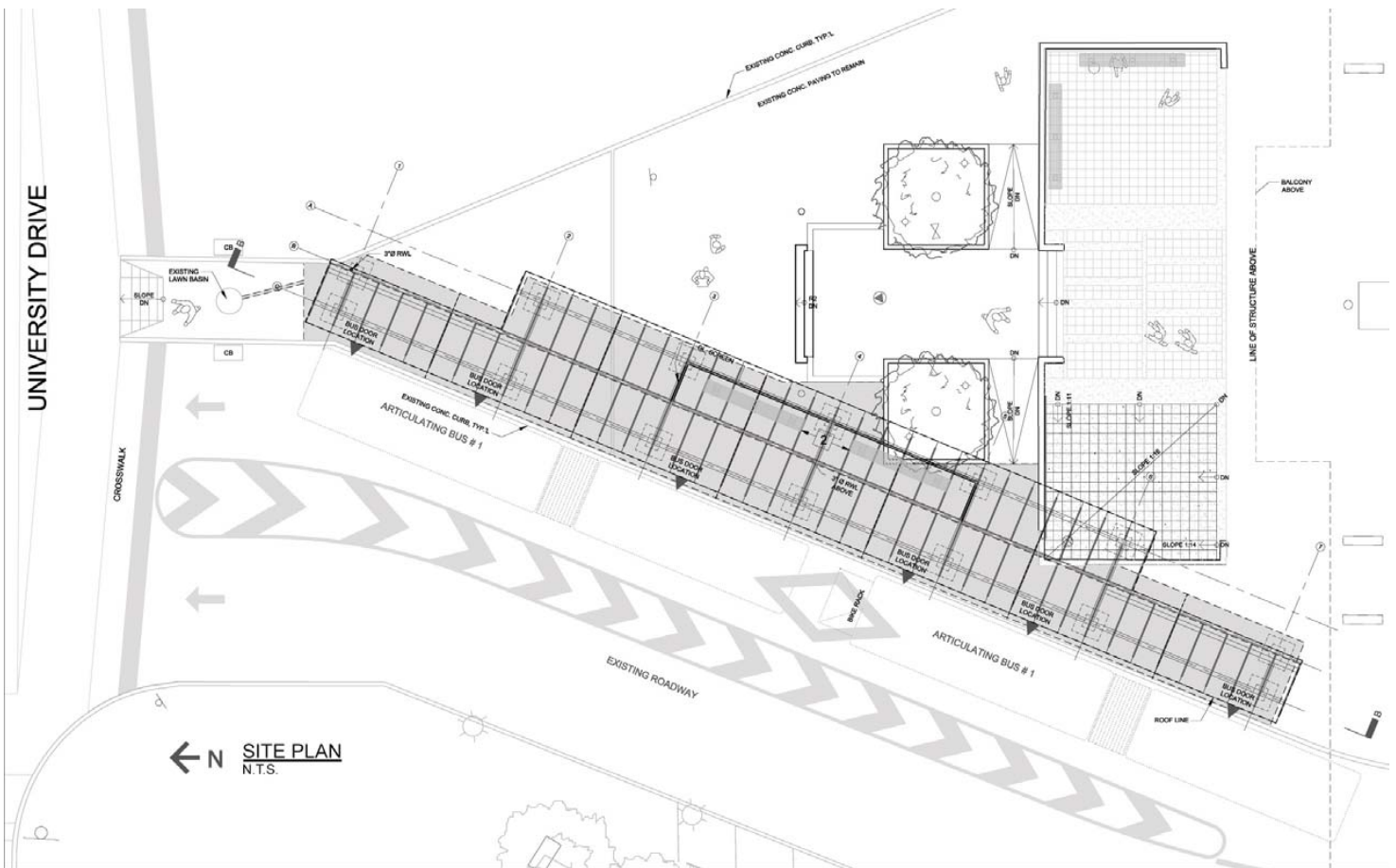
To serve Simon Fraser University's central Burnaby Campus, CAGP was asked by the Campus Planning & Development Office to study alternatives to partially cover the existing 'Transit Centre' island with weather protection for transit users waiting for regular bus service. BC Transit provided primary design criteria for the anticipated 150 person peak-time usage requiring access to two articulated buses.

The triangular-shaped, sloping site is a concrete-paved space located at the confluence of main arterial roads, connecting with the campus' central covered pedestrian spine and adjacent academic buildings. Low concrete walls and stairs dating back to the original 1965 campus construction are to remain as are existing landscaped planters and recently installed site lighting.

After reviewing various design alternatives and related costs, an open-sided steel-frame structure with glass panel roof was selected to fit the elongated space running beside the bus positions. The butterfly roof system with central gutter steps to suit the sloped site with simple, rhythmic steel elements fitting with SFU's modernist built backdrop. Seating is provided within glazed side panels for wind protection. Minimal adjustments are made to existing concrete walls to improve pedestrian circulation with new landscaping and site lighting. Construction Cost: \$300,000, 2006.



**TYPICAL CROSS SECTION**  
N.T.S.



**Client/Contractor:**  
Campus Planning & Development  
Office of Simon Fraser University.

**Site:**  
Simon Fraser University's central  
Burnaby Campus.

**Programme:**  
Weather-protected steel frame/glass roof  
shelter for maximum 150 person peak-  
time use. Low maintenance and vandal-  
proof design required.

**Construction Cost:**  
\$300,000, 2006.