



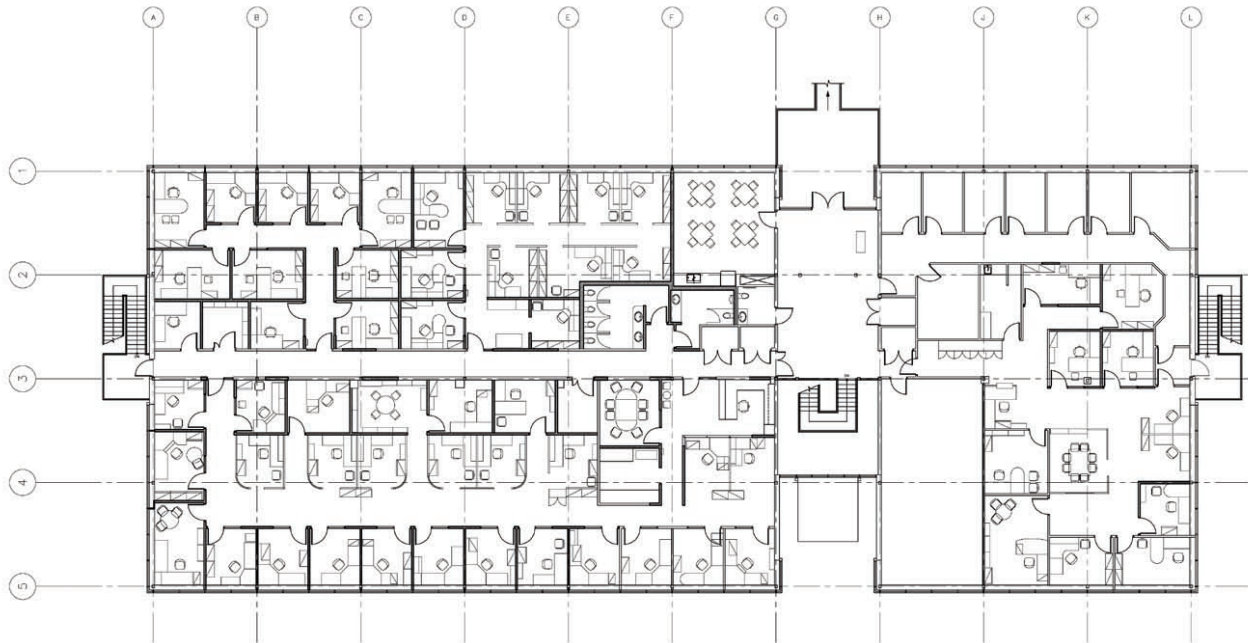
### Burnaby, BC

In early spring 2006, SFU entered into an agreement with Australian-based IBT International College to set up their first Canadian 'undergraduate' college for international students wishing to enter university. Locally named Fraser International College (FIC), the facility was to be open by early September, creating a very condensed design – construction schedule to opening. The site available was a 32,000 GSF 2-storey steel-frame building leased by SFU in a research park adjacent to their Burnaby Campus.

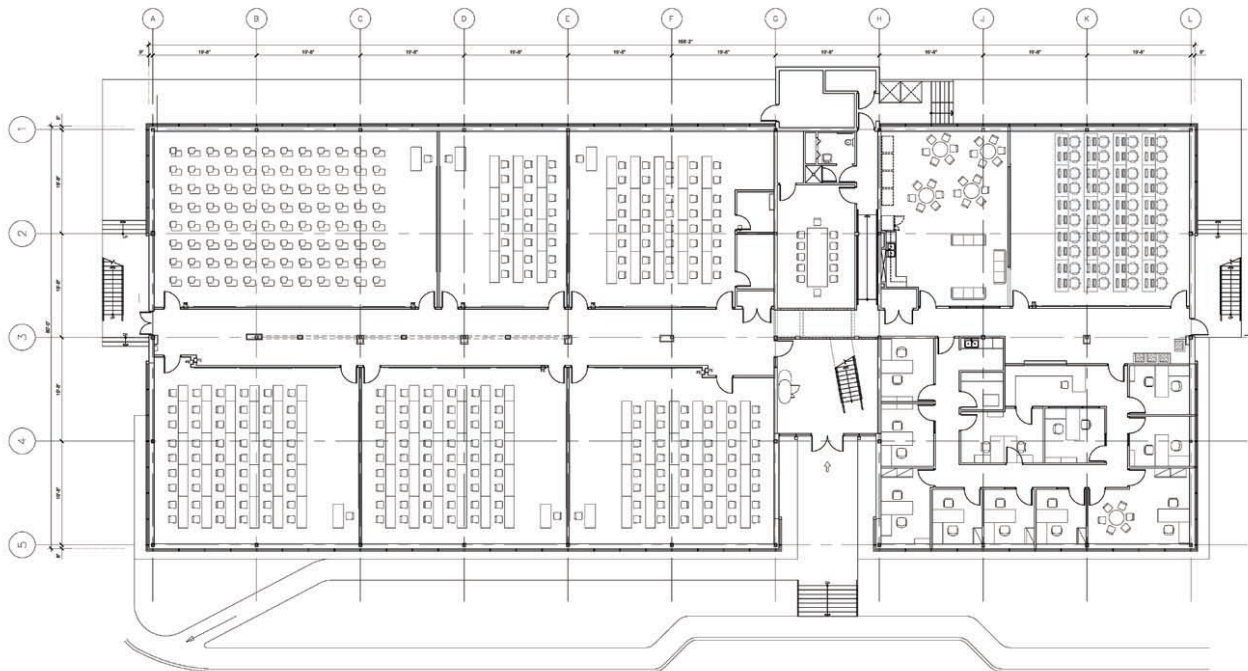
The Lower Floor level of the building is designed with a variety of classrooms and computer labs for use by FIC as well as overflow facilities for SFU undergraduate programs. FIC's administrative offices are also located on this level as well as a student lounge and faculty meeting room. A complicating factor during the fast-track construction of this project was a requirement by City of Burnaby to upgrade the horizontal fire separation in the steel building due to classroom use. This was achieved within the tight timeframe.

With major renovation work underway in the building, it was decided by SFU Campus Planning & Development to have the CAGP / construction management team re-plan most of the Upper Floor level for use by SFU Administrative Offices for four different work groups requiring individual reception areas, offices, meeting rooms, technical support and lounge. This work is to be completed by December, 2006.

Construction Cost: FIC College, \$950K; SFU Administrative Offices, \$800K, 2006.



Proposed Upper Floor Plan ⊕



Proposed Lower Floor Plan ⊕

**Client/Contractor:**

SFU Campus Planning & Development  
Makam Construction Ltd.

**Site:**

Adjacent to the SFU Burnaby Campus in  
Discovery Park research park.

**Programme:**

32,000 GSF c.1990 2-storey steel-frame  
building to contain Fraser International  
College undergraduate teaching facilities  
on the Lower Level with Upper Floor Level  
for use by SFU Administrative Offices.

**Construction Estimate:**

FIC College, \$950K;  
SFU Administrative Offices, \$800K,  
2006.