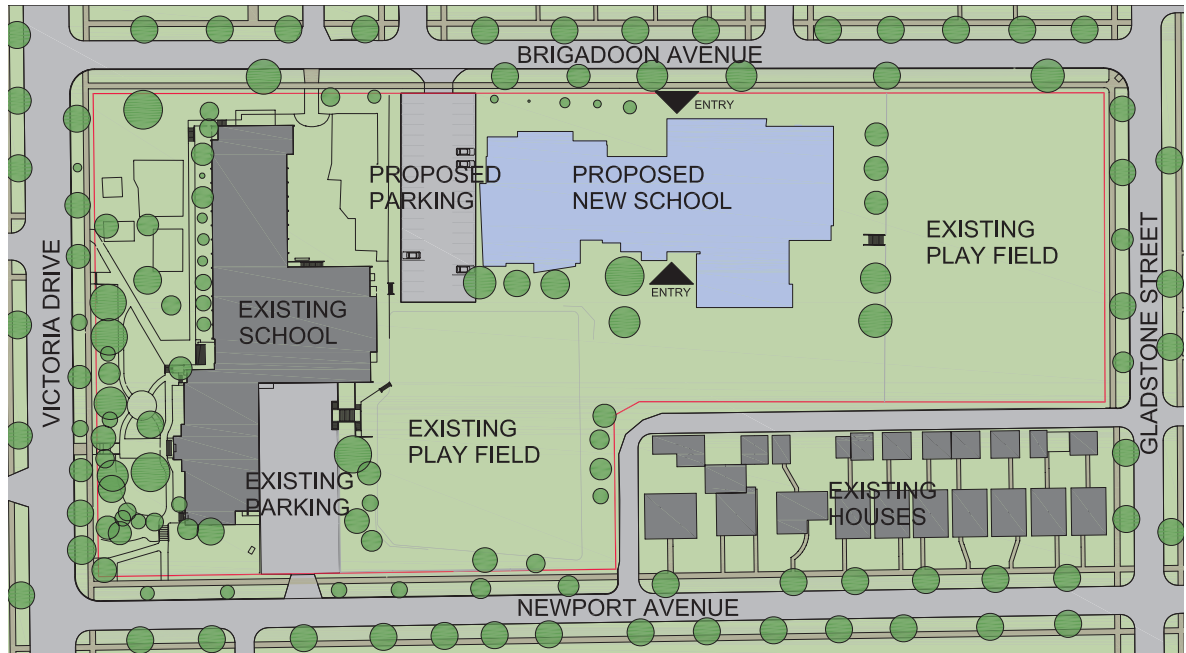




Vancouver, B.C.

The Colborne Architectural Group Pacific Inc. was commissioned by Vancouver School Board to design the new Sir James Douglas Elementary School, located in the Victoria Fraserview district of east Vancouver. The new school replaces an existing school which, following a number of feasibility studies by CAGP, was deemed unsuitable for upgrade. The new school will be located behind the existing school on the current site. Future use of the circa-1912 heritage building is still to be determined.

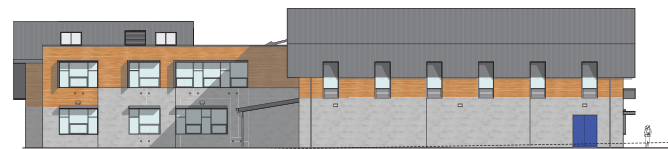
The Replacement School program accommodates 585 Kindergarten to Grade 7 students, plus 60 Early Learning, for a total of 645 students. The project includes a 'Neighbourhood of Learning' component which supplements the standard school program areas to create additional spaces for community groups and the neighbourhood after school hours. The internal layout of the school includes a number of 'learning communities' -- each with a mix of educational spaces clustered around a flexible common space. These facilitate a more adaptive educational environment and encourage sharing of specialized resources. The total building area is approximately 5094 m<sup>2</sup>. Playfield landscaping will be upgraded as part of the project. The new building will have a partial green roof and rely on stormwater retention, as well as advanced mechanical systems including heat recovery, trickle-venting, and a geothermal field. Roof overhangs and horizontal sun shades are used to provide solar shading and architectural expression. Wood is used extensively both for structure and as a finish material. The lower portions of the exterior walls are masonry, while the upper walls will be clad in natural finish wood siding with flat panel accents. Construction estimate \$16 Million, 2010.



SITE PLAN  
NORTH



NORTH ELEVATION



EAST ELEVATION



SOUTH ELEVATION



WEST ELEVATION