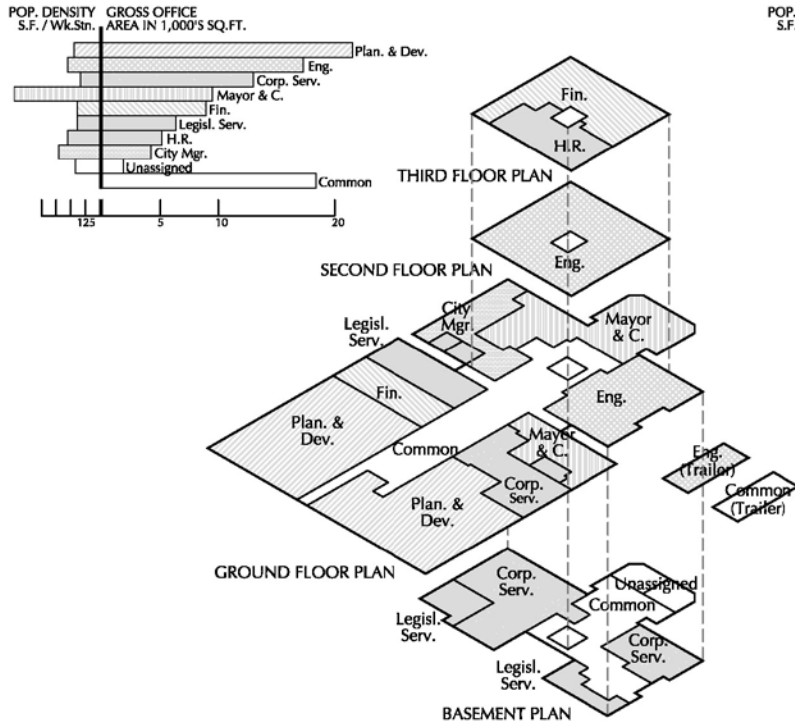
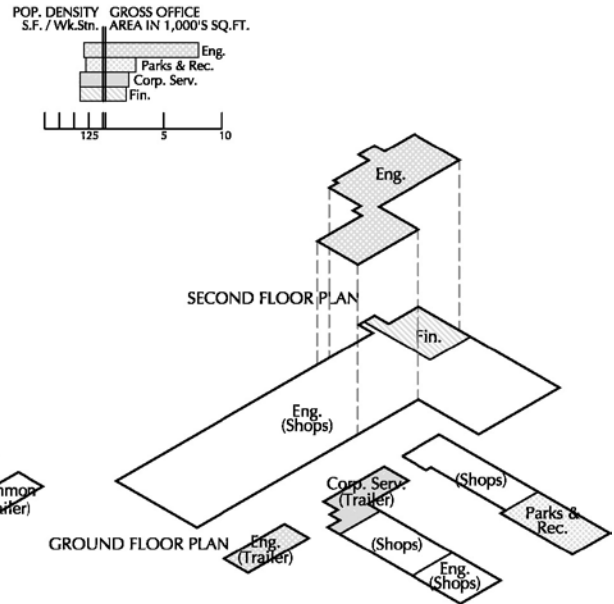


SURREY CITY HALL



CENTRAL WORKS YARD



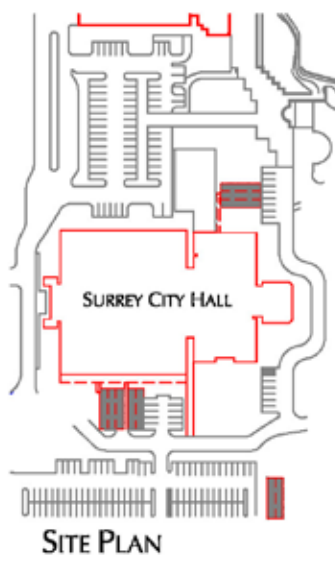
'SHORT TERM' 1-3 YEARS

Surrey, BC:

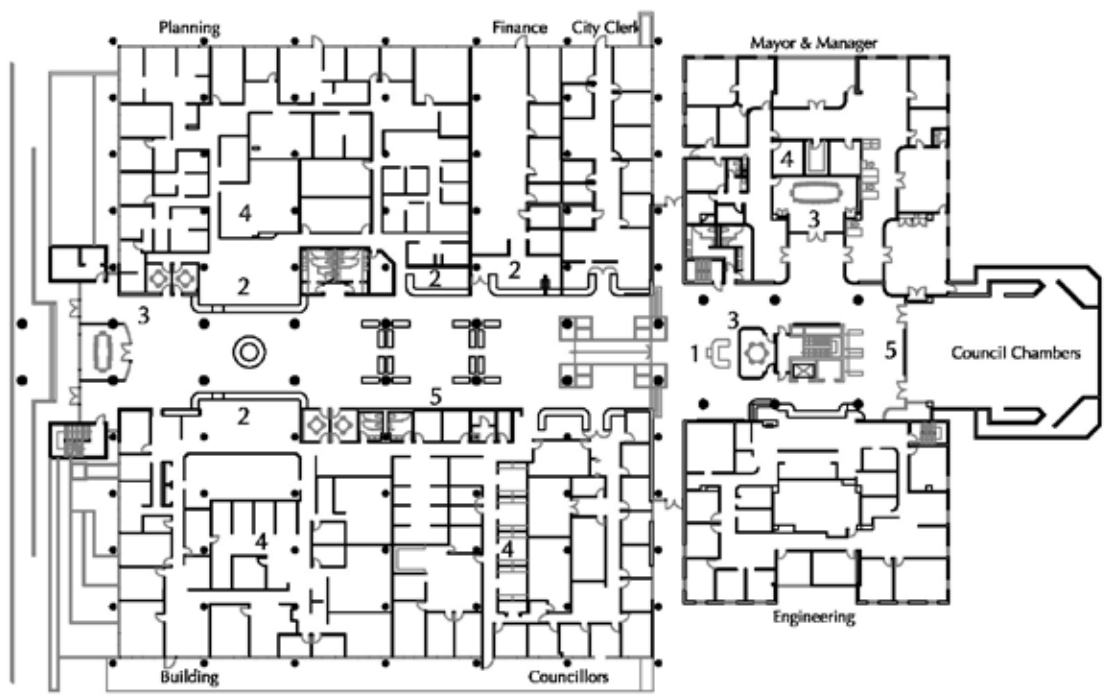
To assist the City of Surrey's Facilities Management Division in the planning and implementation of demands for increased office space by the City's Administrative Departments, The Colborne Architectural Group Pacific Inc. was commissioned to carry out an initial space plan assessment for all major (11) Departments. With Surrey's rapid growth in recent years and expecting this to continue, the City required a better understanding of what building facilities are needed to ensure a good level of service to a growing population.

The initial assignment was to be a "broad brush" assessment of administrative space at Surrey City Hall, the Central Works Yard and three other satellite buildings which support expanded city services. 140,000 sq.ft. of 'assignable' floor area was studied with the objective of developing concepts to meet 'immediate' (3 - 6 months), 'short term' (6 months - 3 years), 'intermediate' (4 - 8 years) and 'long term' (9 years plus) space needs. This resulted in the November 1996 Report, "2020 VISION/Space Plan Update".

In January 1997, a subsequent report, "Administrative Space Plan Development", was commissioned to provide detailed Departmental office space assessments with initial space plan concepts for implementation of the expanded office areas. This study involved all major Administrative Departments indicating how more efficiency could be gained out of existing space or integrating modest design changes. Preliminary construction budgets were developed and a priority list created for immediate and short term space needs leading to the context of the longer term, which pointed towards a major



- Legend:**
- 1 Redesign reception
 - 2 New Service Counter
 - 3 New Meeting Room
 - 4 Revise offices/work areas
 - 5 Improve public display



GROUND FLOOR PLAN